

Chain Conveyor

MNKA



Chain conveyor MNKA.

Efficient product flow.



Chain conveyor MNKA.
All moving parts completely enclosed for high operational reliability.

Application

For conveying dry and floury, fine-grained and coarse-grained products.

Design

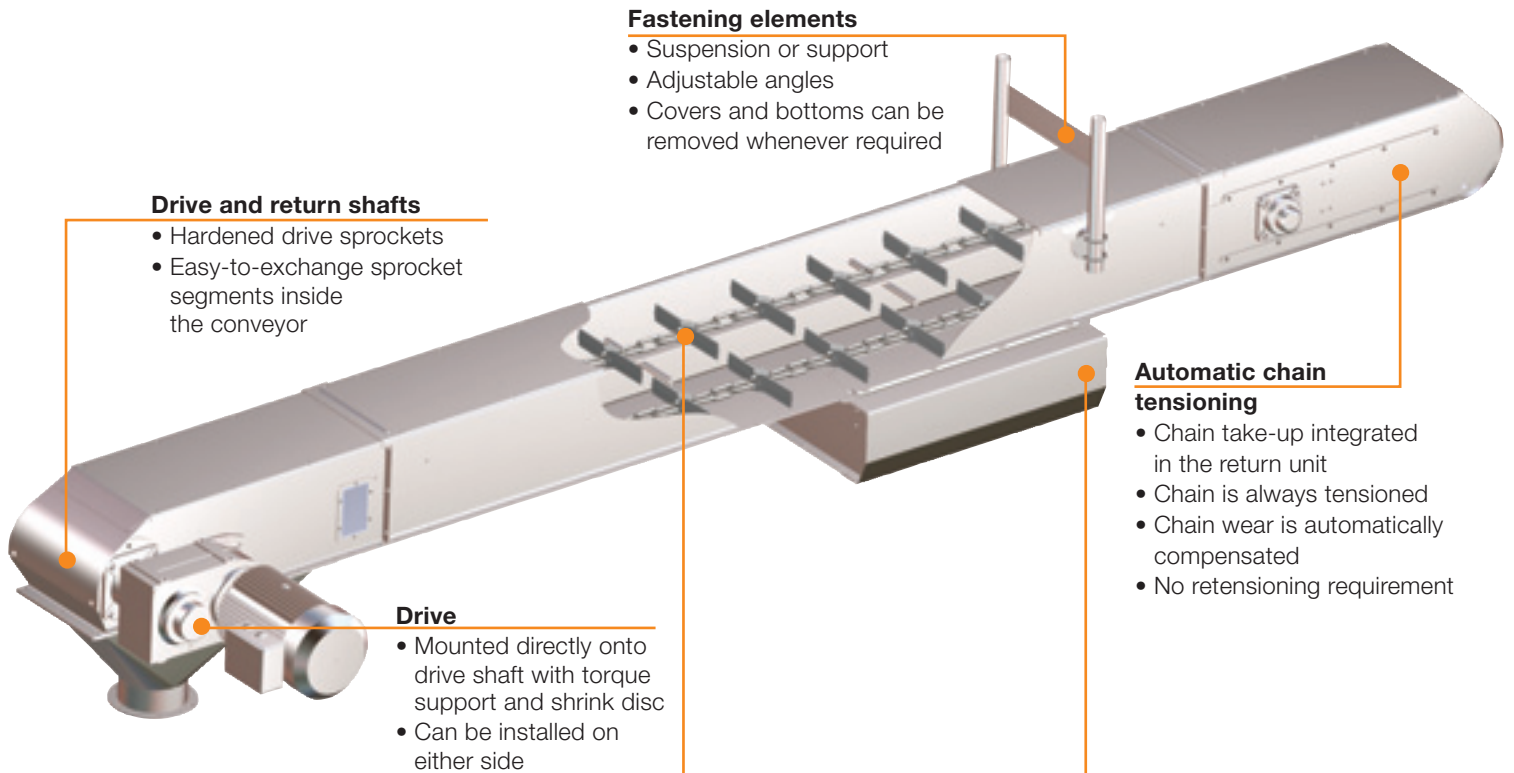
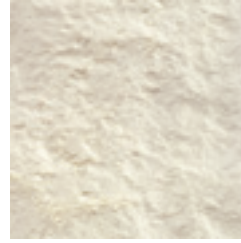
- Straightforward design
- Completely enclosed casing
- No product residues in the drive and return units
- All elements have been optimized to prevent product residues
- Low operating power requirement
- All elements made of materials safe for food applications

Operational reliability

- Sensor for detecting product back-ups in the drive unit
- Sensor for detecting zero chain speed at the return shaft
- Switches indicating end of take-up
- All moving parts completely enclosed

Additional elements

- Cleaning flights for additional clearing for material changes
- Scoops or intermediate bottom for return of carry-over materials
- Dosing elements for different requirements
- Receiving hoppers
- Outlet hoppers with angles of 35° and 55°
- Bent casing sections with angles up to 15°
- Inspection windows



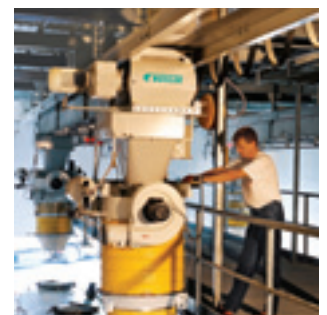
Conveying chain

- Hardened steel chain with high tensile strength
- Round links with short pitch ensure smooth running
- Plastic flights with optimized geometry and steel reinforcements



Outlet gates

- Can be installed in any position
- Clean, tight, no product residues
- Good discharge
- Pneumatic, manual or electric operation of gates



Loadout conveyor, movable, reversible

- Continuous travel
- Dust-tight
- Long loadout range thanks to reversible operation with outlets at both ends

Chain conveyor MNKA.

High operational reliability.



Chain conveyor MNKA.
Execution in stainless steel (optional) for top sanitation.

- reliable
- tight
- top sanitation
- quiet running
- easy maintenance

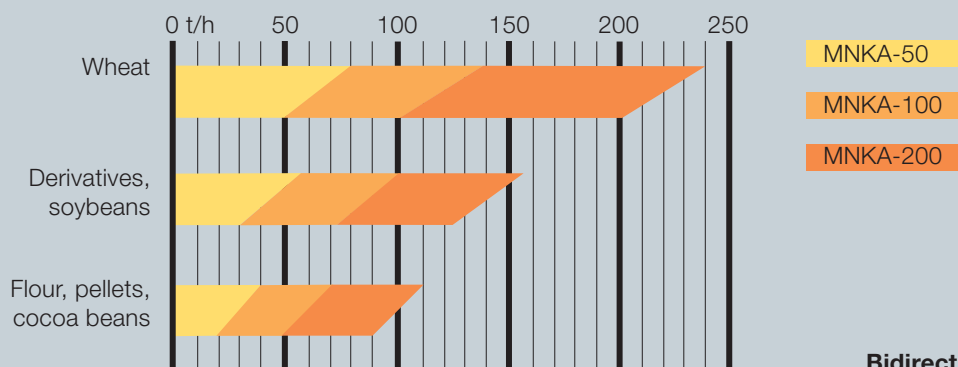
Chain conveyor MNKA. Custom-made solutions.

Conveyor selection

Determining the design version and the optimal conveying velocity requires accurate knowledge of the properties and the conveying characteristics of the product handled.

For the specific selection and determination of all values, please contact the sales and engineering departments.

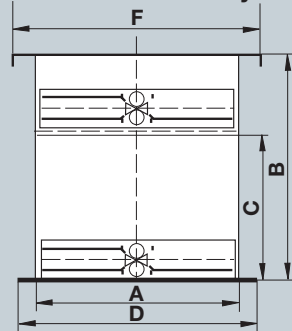
The following table shows approximate values for maximum throughput rates for products with different conveying characteristics.



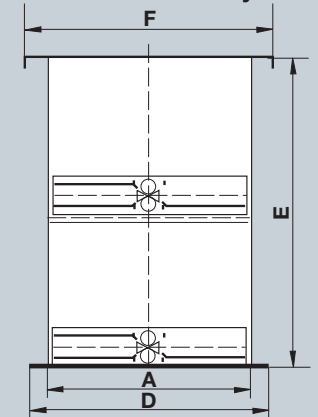
Dimensions (mm)

Type	A	B	C	D	E	F
MNKA-50	240	240	138	290	344	300
MNKA-100	315	350	210	375	480	390
MNKA-200	400	435	285	460	630	475

Unidirectional conveyor



Bidirectional conveyor



Design versions

